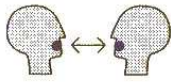


Scénario: describing a shopping center

Worksheet 3

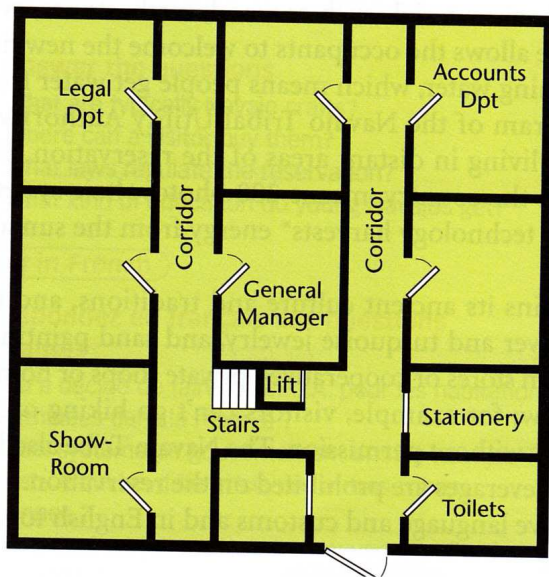


A2- Demander ou donner des descriptions

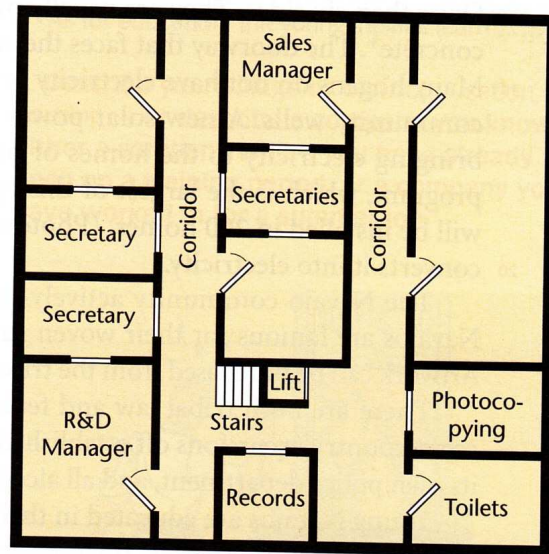
Student A:

1. Ask your partner questions to complete your plan. You will also answer his questions to complete his plan. Be as precise as possible. (Student B: see page 151.)

GROUND FLOOR



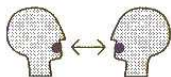
FIRST FLOOR



You must find where the conference room, the transport manager's office, the marketing department, the purchase manager's office, the accounts manager's office, the reception and the personnel manager's office are.

Scénario: describing a shopping center

Worksheet 3

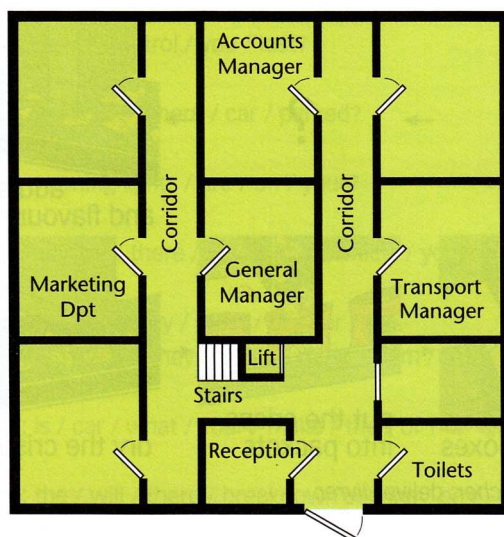


A2- Demander ou donner des descriptions

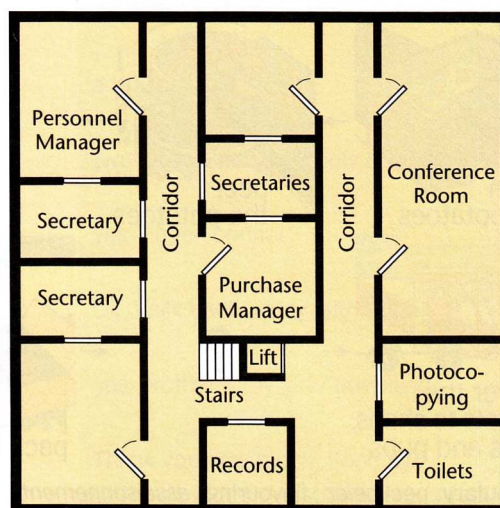
Student B

1. You ask your partner questions to complete your plan.
You will also answer his / her questions to complete his / her plan. Be as precise as possible.
(Student A: see page 33)

GROUND FLOOR



FIRST FLOOR



You must find where: the sales manager's office, the research and development manager's office, the accounts department, the showroom, the legal department, the stationary are.